

MONTHLY MEMBERSHIP PROGRESS REPORT

District 24 I

Results as of: 2/29/2024

GMT:

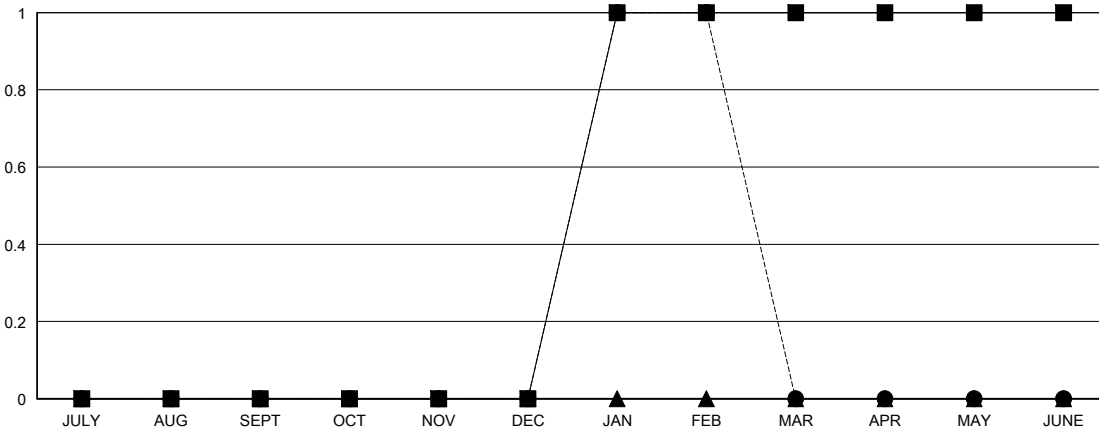
LOCATION VIRGINIA

GMT CA

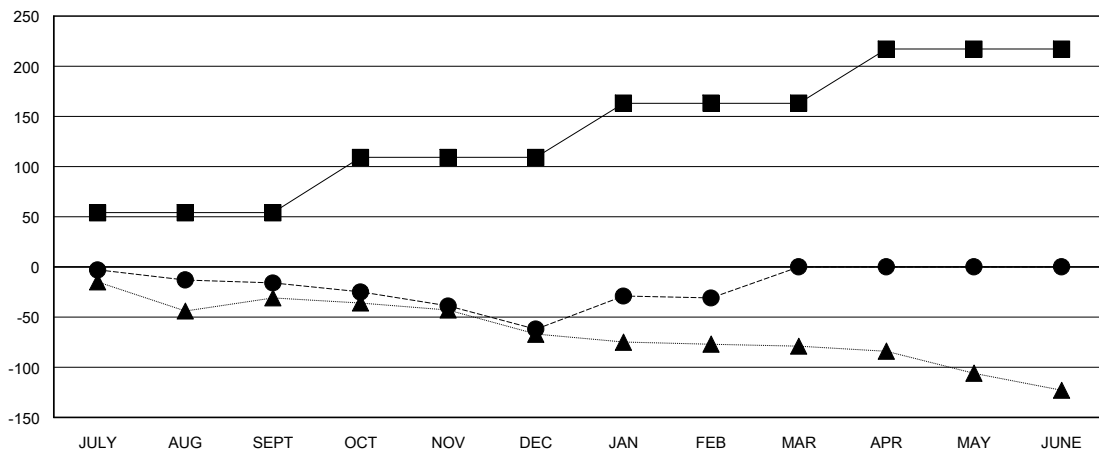
Clubs			
RESULTS FOR 2023-2024			
QUARTER	NEW CLUB GOAL	NEW CLUBS	DROPPED CLUBS
JULY/AUG/SEPT	0	0	1
OCT/NOV/DEC	0	0	1
JAN/FEB/MAR	1	1	0
APR/MAY/JUNE	0	0	0

Members			
RESULTS FOR 2023-2024			
QUARTER	MEMBER GROWTH NET GOAL	MEMBER GROWTH ACTUAL	DROPPED MEMBERS ACTUAL (including transfers)
JULY/AUG/SEPT	54	42	49
OCT/NOV/DEC	55	40	77
JAN/FEB/MAR	54	62	28
APR/MAY/JUNE	54	0	0

GOALS AND ACTUAL NEW CLUBS CUMULATIVE



GOALS AND ACTUAL MEMBERS CUMULATIVE



DROPPED CLUBS: 2	
DROPPED MEMBERS	
DECEASED	18
CLUB CANCELLED	0
OTHER	136
TOTAL	154

37 CLUBS OF 86 ADDED 1 OR MORE NEW MEMBERS

GENDER DISTRIBUTION	
MALE	1,091 (61.81%)
FEMALE	674 (38.19%)

[CLICK HERE FOR CUMULATIVE MEMBERSHIP DATA](#)

TOTAL FAMILY UNIT MEMBERS	269
FAMILY MEMBERS PAYING HALF DUES	136